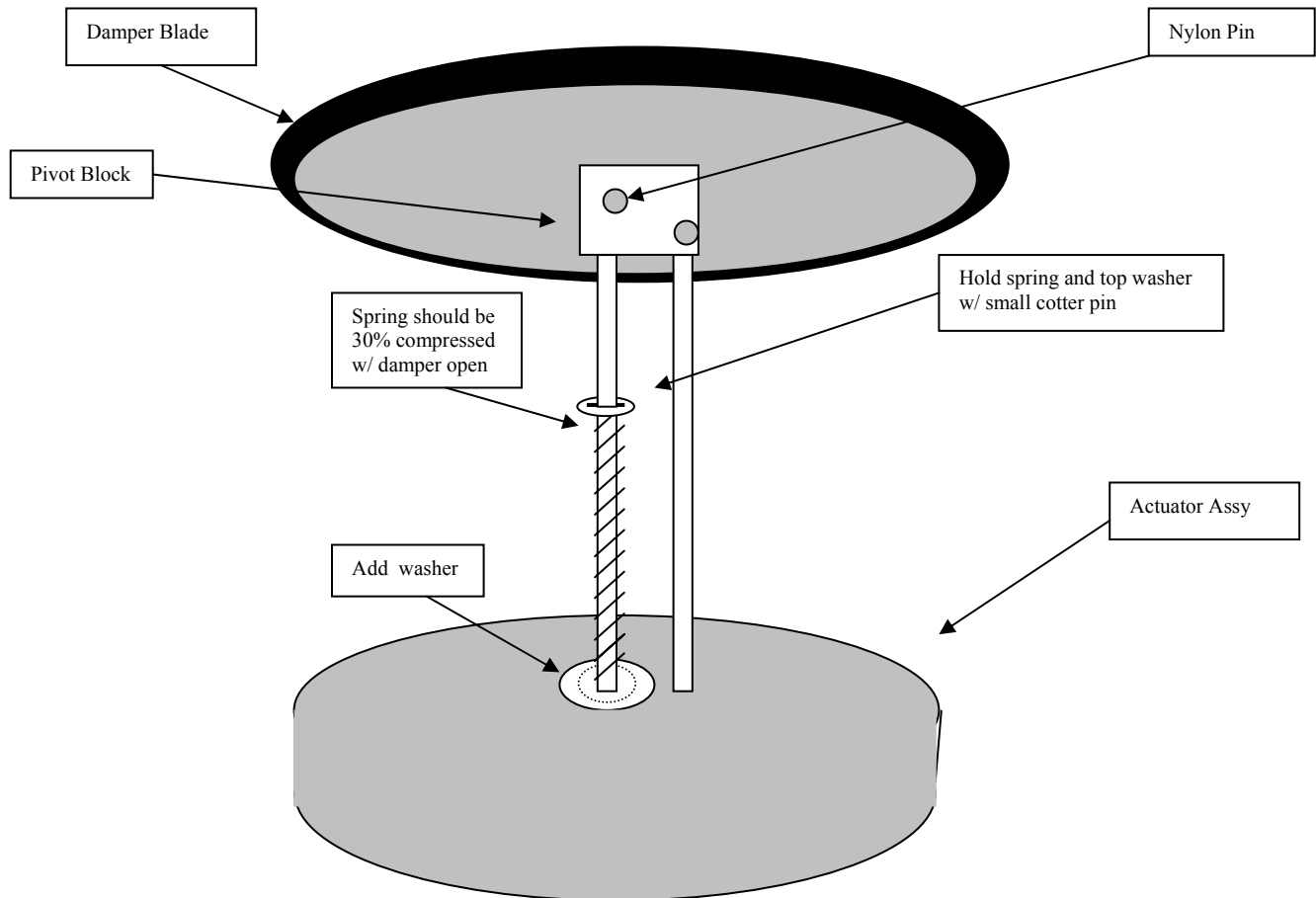


Arzel Zoning Technology

Spring assisted damper return (closed) kit



Spring Installation Process

1. Remove pin that connects the movable rod onto the damper pivot block
2. Slide washer then spring then second washer over the rod.
3. Position the spring so that it is 30% compressed when the damper is open.
4. Mark the rod and drill an 1/8" hole in the rod above the top washer.
5. Insert the cotter pin above the washer and test for complete closure with spring installed.

Arzel Zoning Technology, Inc.

1-800-611-8312

www.arzelzoning.com