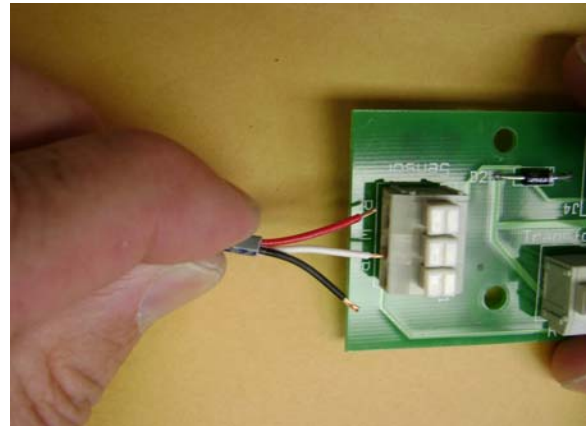
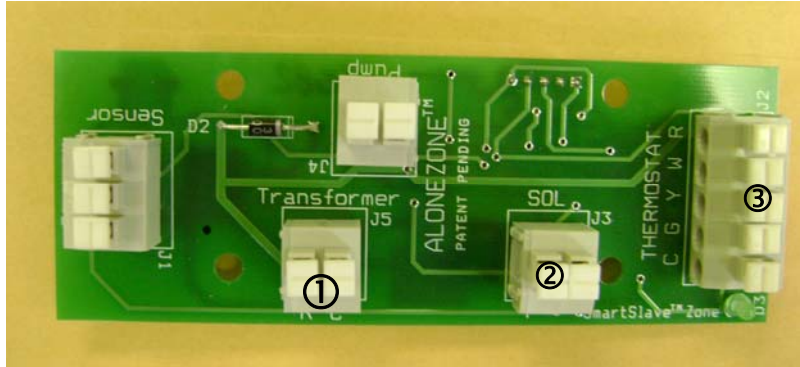


# SmartSlave™ Zone II Field Kit Installation Instructions

1. Mount board in AirBoss®, MPS™ Series, or HeatPumPro™ enclosure. There are predrilled holes in the AirBoss® enclosure. Otherwise, place the SmartSlave II™ in the enclosure to ensure it will fit where you want it. Use the Template included in the kit to place the holes. Drill four (4) - 5/32" holes. Mount the standoffs through these holes.
2. Connect Slave Transformer terminals ① to a convenient set of Zone thermostat R and C terminals respectively on the main board.
3. Install a Solenoid into an open Slot along the top of the enclosure so that the Common Port of the Solenoid (opposite side from the wires) protrudes through the top of the enclosure.
4. Connect the solenoid wires to the Solenoid terminal blocks ②.
5. Connect the Slave thermostat into the thermostat terminal block ③.
6. Connect the sensor into the sensor terminal block. Make sure you follow the wire color code. R=Red, W=White, B=Black
7. The Sensor should be installed through a 1/4" opening in the ductwork in a place where there is continuous airflow. Do not install it in the branch run feeding that zone.
8. The Green LED will come on and the Slave Damper(s) will open when the thermostat call matches the service available. (eg. If the temperature in the ductwork is 90 degrees and the slave wants heat the damper will open otherwise it will stay closed.
9. Disregard the Pump Terminal. It is for a different application.



## SmartSlave™ Zone II Drilling Template

Fold Template Here

✂ Cut Here

